

RASF5 Rabbit Polyclonal Antibody

Description

Product type	Primary Antibody
Code	BT-AP12232
Host	Rabbit
Isotype	IgG
Size	20ul, 50ul, 100ul
Immunogen	Synthesized peptide derived from human RASF5
Mol wt	45980
Species reactivity	Human, Mouse, Rat
Clonality	Polyclonal
Recommended application	WB
Concentration	1 mg/ml
Full name	RASF5
Synonyms	RASF5

This product is for research use only, not for use in human, therapeutic or diagnostic procedure.

Background

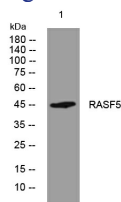
This gene is a member of the Ras association domain family. It functions as a tumor suppressor and is inactivated in a variety of cancers. The encoded protein localizes to centrosomes and microtubules and associates with the GTP-activated forms of Ras and Rap1 and several other Ras-like small GTPases. The protein regulates lymphocyte adhesion and suppresses cell growth in response to activated Rap1 or Ras. Multiple transcript variants encoding different isoforms have been found for this gene.

Recommended Dilution

WB: 1: 500 - 1: 2000

Not yet tested in other applications.

Images



Western blot analysis of lysates from HeLa cells, primary antibody was diluted at 1:1000, 4°C overnight

Storage

-20°C for 1 year