

RAX2 Rabbit Polyclonal Antibody

Description

Product type	Primary Antibody
Code	BT-AP12236
Host	Rabbit
Isotype	IgG
Size	20ul, 50ul, 100ul
Immunogen	Synthesized peptide derived from human RAX2
Mol wt	20240
Species reactivity	Human, Rat, Mouse
Clonality	Polyclonal
Recommended application	WB
Concentration	1 mg/ml
Full name	RAX2
Synonyms	RAX2

This product is for research use only, not for use in human, therapeutic or diagnostic procedure.

Background

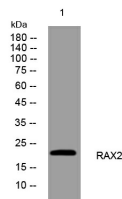
This gene encodes a homeodomain-containing protein that plays a role in eye development. Mutation of this gene causes age-related macular degeneration type 6| an eye disorder resulting in accumulations of protein and lipid beneath the retinal pigment epithelium and within the Bruch's membrane. Defects in this gene can also cause cone-rod dystrophy type 11| a disease characterized by the initial degeneration of cone photoreceptor cells and resulting in loss of color vision and visual acuity| followed by the degeneration of rod photoreceptor cells| which progresses to night blindness and the loss of peripheral vision. Alternative splicing results in multiple transcript variants.

Recommended Dilution

WB: 1: 500 - 1: 2000

Not yet tested in other applications.

Images



Western blot analysis of lysates from HpeG2 cells, primary antibody was diluted at 1:1000, 4°C overnight

Storage

-20°C for 1 year