

## RCBT2 Rabbit Polyclonal Antibody

### Description

Product type	Primary Antibody
Code	BT-AP12251
Host	Rabbit
Isotype	IgG
Size	20ul, 50ul, 100ul
Immunogen	Synthesized peptide derived from human RCBT2
Mol wt	60610
Species reactivity	Human, Mouse, Rat
Clonality	Polyclonal
Recommended application	WB
Concentration	1 mg/ml
Full name	RCBT2
Synonyms	RCBT2

This product is for research use only, not for use in human, therapeutic or diagnostic procedure.

### Background

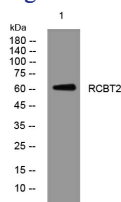
This gene encodes a protein containing two C-terminal BTB/POZ domains that is related to regulator of chromosome condensation (RCC). The encoded protein may act as a guanine nucleotide exchange factor. This gene is observed to be lost or underexpressed in prostate cancers. There is a pseudogene of this gene on chromosome 10. Alternative splicing results in multiple transcript variants.

### Recommended Dilution

WB: 1: 500 - 1: 2000

Not yet tested in other applications.

### Images



Western blot analysis of lysates from A431 cells, primary antibody was diluted at 1:1000, 4°C overnight

### Storage

-20°C for 1 year

501 Changsheng S Rd, Nanhu Dist, Jiaxing, Zhejiang, China

Tel: 86 21 31007137 | E-mail: [save@bt-laboratory.com](mailto:save@bt-laboratory.com) | [www.bt-laboratory.com](http://www.bt-laboratory.com)