

## RLP24 Rabbit Polyclonal Antibody

### Description

<b>Product type</b>	Primary Antibody
<b>Code</b>	BT-AP12303
<b>Host</b>	Rabbit
<b>Isotype</b>	IgG
<b>Size</b>	20ul, 50ul, 100ul
<b>Immunogen</b>	Synthesized peptide derived from human RLP24
<b>Mol wt</b>	17930
<b>Species reactivity</b>	Human, Mouse, Rat
<b>Clonality</b>	Polyclonal
<b>Recommended application</b>	WB
<b>Concentration</b>	1 mg/ml
<b>Full name</b>	RLP24
<b>Synonyms</b>	RLP24

This product is for research use only, not for use in human, therapeutic or diagnostic procedure.

### Background

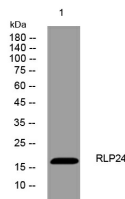
This gene encodes a protein sharing a low level of sequence similarity with human ribosomal protein L24. Although this gene has been referred to as RPL24| L30| and 60S ribosomal protein L30 isolog in the sequence databases| it is distinct from the human genes officially named RPL24 (which itself has been referred to as ribosomal protein L30) and RPL30. The protein encoded by this gene localizes to the nucleolus and is thought to play a role in the biogenesis of the 60S ribosomal subunit. The precise function of this gene is currently unknown. This gene utilizes alternative polyadenylation signals and has multiple pseudogenes.

### Recommended Dilution

WB: 1: 500 - 1: 2000

Not yet tested in other applications.

### Images



Western blot analysis of lysates from 293T cells, primary antibody was diluted at 1:1000, 4°C overnight

### Storage

-20°C for 1 year