

RMXL1 Rabbit Polyclonal Antibody

Description

Product type	Primary Antibody
Code	BT-AP12306
Host	Rabbit
Isotype	IgG
Size	20ul, 50ul, 100ul
Immunogen	Synthesized peptide derived from human RMXL1
Mol wt	42900
Species reactivity	Human, Mouse, Rat
Clonality	Polyclonal
Recommended application	WB
Concentration	1 mg/ml
Full name	RMXL1
Synonyms	RMXL1

This product is for research use only, not for use in human, therapeutic or diagnostic procedure.

Background

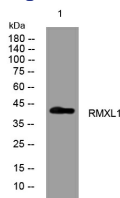
This gene represents a retrogene of RNA binding motif protein| X-linked (RBMX)| which is located on chromosome X. While all introns in the coding sequence have been processed out compared to the RBMX locus| the ORF is intact and there is specific evidence for transcription at this location. The preservation of the ORF by purifying selection in all Old World monkeys carrying it suggests that this locus is likely to be functional| possibly during male meiosis when X chromosomal genes are silenced or during haploid stages of spermatogenesis. This gene shares 5' exon structure with the cysteine conjugate-beta lyase 2 locus on chromosome 1| but the coding sequences are non-overlapping. Alternative splicing results in two transcript variants.

Recommended Dilution

WB: 1: 500 - 1: 2000

Not yet tested in other applications.

Images



Western blot analysis of lysates from HpeG2 cells, primary antibody was diluted at 1:1000, 4°C overnight

Storage

-20°C for 1 year