

ROM1 Rabbit Polyclonal Antibody

Description

Product type	Primary Antibody
Code	BT-AP12335
Host	Rabbit
Isotype	IgG
Size	20ul, 50ul, 100ul
Immunogen	Synthesized peptide derived from human ROM1
Mol wt	38610
Species reactivity	Human, Mouse, Rat
Clonality	Polyclonal
Recommended application	WB
Concentration	1 mg/ml
Full name	ROM1
Synonyms	ROM1

This product is for research use only, not for use in human, therapeutic or diagnostic procedure.

Background

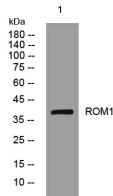
This gene is a member of a photoreceptor-specific gene family and encodes an integral membrane protein found in the photoreceptor disk rim of the eye. This protein can form homodimers or can heterodimerize with another photoreceptor| retinal degeneration slow (RDS). It is essential for disk morphogenesis| and may also function as an adhesion molecule involved in the stabilization and compaction of outer segment disks or in the maintenance of the curvature of the rim. Certain defects in this gene have been associated with the degenerative eye disease retinitis pigmentosa.

Recommended Dilution

WB: 1: 500 - 1: 2000

Not yet tested in other applications.

Images



Western blot analysis of lysates from CACO2 cells, primary antibody was diluted at 1:1000, 4°C overnight

Storage

-20°C for 1 year