

RSMB Rabbit Polyclonal Antibody

Description

Product type	Primary Antibody
Code	BT-AP12350
Host	Rabbit
Isotype	IgG
Size	20ul, 50ul, 100ul
Immunogen	Synthesized peptide derived from human RSMB
Mol wt	26400
Species reactivity	Human, Mouse, Rat
Clonality	Polyclonal
Recommended application	WB
Concentration	1 mg/ml
Full name	RSMB
Synonyms	RSMB

This product is for research use only, not for use in human, therapeutic or diagnostic procedure.

Background

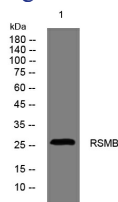
The protein encoded by this gene is one of several nuclear proteins that are found in common among U1| U2| U4/U6| and U5 small ribonucleoprotein particles (snRNPs). These snRNPs are involved in pre-mRNA splicing| and the encoded protein may also play a role in pre-mRNA splicing or snRNP structure. Autoantibodies from patients with systemic lupus erythematosus frequently recognize epitopes on the encoded protein. Two transcript variants encoding different isoforms (B and B') have been found for this gene.

Recommended Dilution

WB: 1: 500 - 1: 2000

Not yet tested in other applications.

Images



Western blot analysis of lysates from HeLa cells, primary antibody was diluted at 1:1000, 4°C overnight

Storage

-20°C for 1 year