

RT4I1 Rabbit Polyclonal Antibody

Description

Product type	Primary Antibody
Code	BT-AP12354
Host	Rabbit
Isotype	IgG
Size	20ul, 50ul, 100ul
Immunogen	Synthesized peptide derived from human RT4I1
Mol wt	43560
Species reactivity	Human, Mouse
Clonality	Polyclonal
Recommended application	WB
Concentration	1 mg/ml
Full name	RT4I1
Synonyms	RT4I1

This product is for research use only, not for use in human, therapeutic or diagnostic procedure.

Background

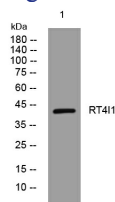
This gene encodes a mitochondrial protein that interacts with reticulon 4 which is a potent inhibitor of regeneration following spinal cord injury. This interaction may be important for reticulon-induced inhibition of neurite growth. Mutations in this gene can cause optic atrophy 10 with or without ataxia mental retardation and seizures. There is a pseudogene for this gene on chromosome 12. Alternative splicing results in multiple transcript variants.

Recommended Dilution

WB: 1: 500 - 1: 2000

Not yet tested in other applications.

Images



Western blot analysis of lysates from HpeG2 cells, primary antibody was diluted at 1:1000, 4°C overnight

Storage

-20°C for 1 year