

S13A5 Rabbit Polyclonal Antibody

Description

Product type	Primary Antibody
Code	BT-AP12366
Host	Rabbit
Isotype	IgG
Size	20ul, 50ul, 100ul
Immunogen	Synthesized peptide derived from human S13A5
Mol wt	N/A
Species reactivity	Human, Mouse, Rat
Clonality	Polyclonal
Recommended application	WB
Concentration	1 mg/ml
Full name	S13A5
Synonyms	S13A5; Solute carrier family 13 member 5; Na ⁺ /citrate cotransporter; NaCT; Sodium-coupled citrate transporter; Sodium-dependent citrate transporter

This product is for research use only, not for use in human, therapeutic or diagnostic procedure.

Background

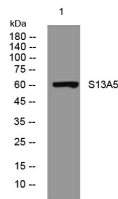
This gene encodes a protein belonging to the solute carrier family 13 group of proteins. This family member is a sodium-dependent citrate cotransporter that may regulate metabolic processes. Mutations in this gene cause early infantile epileptic encephalopathy 25. Alternative splicing results in multiple transcript variants.

Recommended Dilution

WB: 1: 500 - 1: 2000

Not yet tested in other applications.

Images



Western blot analysis of lysates from K562 cells, primary antibody was diluted at 1:1000, 4°C overnight

Storage

-20°C for 1 year