

S2533 Rabbit Polyclonal Antibody

Description

Product type	Primary Antibody
Code	BT-AP12380
Host	Rabbit
Isotype	IgG
Size	20ul, 50ul, 100ul
Immunogen	Synthesized peptide derived from human S2533
Mol wt	35310
Species reactivity	Human, Mouse
Clonality	Polyclonal
Recommended application	WB
Concentration	1 mg/ml
Full name	S2533
Synonyms	S2533

This product is for research use only, not for use in human, therapeutic or diagnostic procedure.

Background

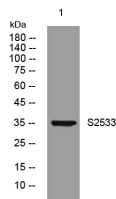
SLC25A33 belongs to the SLC25 family of mitochondrial carrier proteins (Haitina et al. 2006)

Recommended Dilution

WB: 1: 500 - 1: 2000

Not yet tested in other applications.

Images



Western blot analysis of lysates from KB cells, primary antibody was diluted at 1:1000, 4°C overnight

Storage

-20°C for 1 year

501 Changsheng S Rd, Nanhu Dist, Jiaxing, Zhejiang, China

Tel: 86 21 31007137 | E-mail: save@bt-laboratory.com | www.bt-laboratory.com