

S2541 Rabbit Polyclonal Antibody

Description

Product type	Primary Antibody
Code	BT-AP12382
Host	Rabbit
Isotype	IgG
Size	20ul, 50ul, 100ul
Immunogen	Synthesized peptide derived from human S2541
Mol wt	40700
Species reactivity	Human, Mouse
Clonality	Polyclonal
Recommended application	WB
Concentration	1 mg/ml
Full name	S2541
Synonyms	S2541

This product is for research use only, not for use in human, therapeutic or diagnostic procedure.

Background

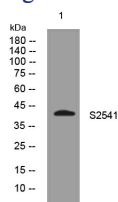
SLC25A41 belongs to the SLC25 family of mitochondrial carrier proteins (Haitina et al. 2006)

Recommended Dilution

WB: 1: 500 - 1: 2000

Not yet tested in other applications.

Images



Western blot analysis of lysates from HeLa cells, primary antibody was diluted at 1:1000, 4°C overnight

Storage

-20°C for 1 year

501 Changsheng S Rd, Nanhu Dist, Jiaxing, Zhejiang, China

Tel: 86 21 31007137 | E-mail: save@bt-laboratory.com | www.bt-laboratory.com