

S2546 Rabbit Polyclonal Antibody

Description

Product type	Primary Antibody
Code	BT-AP12387
Host	Rabbit
Isotype	IgG
Size	20ul, 50ul, 100ul
Immunogen	Synthesized peptide derived from human S2546
Mol wt	45980
Species reactivity	Human, Mouse, Rat
Clonality	Polyclonal
Recommended application	WB
Concentration	1 mg/ml
Full name	S2546
Synonyms	S2546

This product is for research use only, not for use in human, therapeutic or diagnostic procedure.

Background

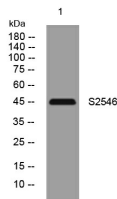
This gene encodes a mitochondrial solute carrier protein family member. It functions in promoting mitochondrial fission and prevents the formation of hyperfilamentous mitochondria. Mutation of this gene results in neuropathy and optic atrophy.

Recommended Dilution

WB: 1: 500 - 1: 2000

Not yet tested in other applications.

Images



Storage

-20°C for 1 year

501 Changsheng S Rd, Nanhu Dist, Jiaxing, Zhejiang, China

Tel: 86 21 31007137 | E-mail: save@bt-laboratory.com | www.bt-laboratory.com