

## S29A4 Rabbit Polyclonal Antibody

### Description

Product type	Primary Antibody
Code	BT-AP12394
Host	Rabbit
Isotype	IgG
Size	20ul, 50ul, 100ul
Immunogen	Synthesized peptide derived from human S29A4
Mol wt	58300
Species reactivity	Human, Mouse
Clonality	Polyclonal
Recommended application	WB
Concentration	1 mg/ml
Full name	S29A4
Synonyms	S29A4

This product is for research use only, not for use in human, therapeutic or diagnostic procedure.

### Background

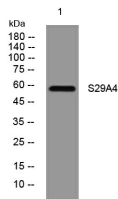
This gene encodes a member of the SLC29A/ENT transporter protein family. The encoded membrane protein catalyzes the reuptake of monoamines into presynaptic neurons| thus determining the intensity and duration of monoamine neural signaling. It has been shown to transport several compounds| including serotonin| dopamine| and the neurotoxin 1-methyl-4-phenylpyridinium. Alternative splicing results in multiple transcript variants.

### Recommended Dilution

WB: 1: 500 - 1: 2000

Not yet tested in other applications.

### Images



Western blot analysis of lysates from MCF-7 cells, primary antibody was diluted at 1:1000, 4°C overnight

### Storage

-20°C for 1 year