

S35D2 Rabbit Polyclonal Antibody

Description

Product type	Primary Antibody
Code	BT-AP12399
Host	Rabbit
Isotype	IgG
Size	20ul, 50ul, 100ul
Immunogen	Synthesized peptide derived from human S35D2
Mol wt	37070
Species reactivity	Human, Mouse
Clonality	Polyclonal
Recommended application	WB
Concentration	1 mg/ml
Full name	S35D2
Synonyms	S35D2

This product is for research use only, not for use in human, therapeutic or diagnostic procedure.

Background

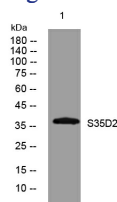
Nucleotide sugars which are synthesized in the cytosol or the nucleus are high-energy donor substrates for glycosyltransferases located in the lumen of the endoplasmic reticulum and Golgi apparatus. Translocation of nucleotide sugars from the cytosol into the lumen compartment is mediated by specific nucleotide sugar transporters such as SLC35D2 (Suda et al. 2004)

Recommended Dilution

WB: 1: 500 - 1: 2000

Not yet tested in other applications.

Images



Western blot analysis of lysates from HpeG2 cells, primary antibody was diluted at 1:1000, 4°C overnight

Storage

-20°C for 1 year

501 Changsheng S Rd, Nanhu Dist, Jiaxing, Zhejiang, China

Tel: 86 21 31007137 | E-mail: save@bt-laboratory.com | www.bt-laboratory.com