

OMD Polyclonal Antibody

Description

Product type	Primary Antibody
Code	BT-AP12411
Host	Rabbit
Isotype	IgG
Size	20ul, 50ul, 100ul
Immunogen	Synthesized peptide derived from part region of human protein
Mol wt	N/A
Species reactivity	Human, Rat, Mouse
Clonality	Polyclonal
Recommended application	WB, ELISA
Concentration	1 mg/ml
Full name	Osteomodulin
Synonyms	Osteomodulin ;Keratan sulfate proteoglycan osteomodulin;KSPG osteomodulin;Osteoadherin;OSAD

This product is for research use only, not for use in human, therapeutic or diagnostic procedure.

Background

May be implicated in biomineralization processes. Has a function in binding of osteoblasts via the alpha(V)beta(3)-integrin.,PTM: Binds keratan sulfate chains.,Belongs to the small leucine-rich proteoglycan (SLRP) family. Class II subfamily.,Contains 12 LRR (leucine-rich) repeats.,subunit: Binds the alpha(V)beta(3)-integrin.,tissue specificity: Bone specific.,

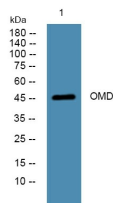
Recommended Dilution

WB: 1: 500 - 1: 2000

ELISA: 1: 5000 - 1: 20000

Not yet tested in other applications.

Images



Western blot analysis of lysates from K562 cells, primary antibody was diluted at 1:1000, 4°C overnight

Storage

-20°C for 1 year