

S38A8 Rabbit Polyclonal Antibody

Description

Product type	Primary Antibody
Code	BT-AP12417
Host	Rabbit
Isotype	IgG
Size	20ul, 50ul, 100ul
Immunogen	Synthesized peptide derived from human S38A8
Mol wt	47850
Species reactivity	Human, Mouse
Clonality	Polyclonal
Recommended application	WB
Concentration	1 mg/ml
Full name	S38A8
Synonyms	S38A8

This product is for research use only, not for use in human, therapeutic or diagnostic procedure.

Background

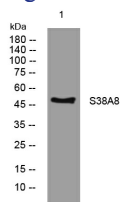
This gene encodes a putative sodium-dependent amino-acid/proton antiporter. The protein has eleven transmembrane domains| an extracellular N-terminus and an intracellular C-terminal tail. The protein is a member of the SLC38 sodium-coupled neutral amino acid transporter family of proteins. Mutations in this gene result in foveal hypoplasia with or without optic nerve misrouting and/or anterior segment dysgenesis.

Recommended Dilution

WB: 1: 500 - 1: 2000

Not yet tested in other applications.

Images



Western blot analysis of lysates from Jarkat cells, primary antibody was diluted at 1:1000, 4°C overnight

Storage

-20°C for 1 year