

OR1E1 Polyclonal Antibody

Description

Product type	Primary Antibody
Code	BT-AP12430
Host	Rabbit
Isotype	IgG
Size	20ul, 50ul, 100ul
Immunogen	Synthesized peptide derived from part region of human protein
Mol wt	N/A
Species reactivity	Human, Rat, Mouse
Clonality	Polyclonal
Recommended application	WB, ELISA
Concentration	1 mg/ml
Full name	Olfactory receptor 1E1
Synonyms	Olfactory receptor 1E1 ;Olfactory receptor 13-66;OR13-66;Olfactory receptor 17-2/17-32;OR17-2;OR17-32;Olfactory receptor 1E5;Olfactory receptor 1E6;Olfactory receptor 5-85;OR5-85;Olf

This product is for research use only, not for use in human, therapeutic or diagnostic procedure.

Background

Olfactory receptors interact with odorant molecules in the nose, to initiate a neuronal response that triggers the perception of a smell. The olfactory receptor proteins are members of a large family of G-protein-coupled receptors (GPCR) arising from single coding-exon genes. Olfactory receptors share a 7-transmembrane domain structure with many neurotransmitter and hormone receptors and are responsible for the recognition and G protein-mediated transduction of odorant signals. The olfactory receptor gene family is the largest in the genome. The nomenclature assigned to the olfactory receptor genes and proteins for this organism is independent of other organisms.

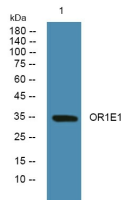
Recommended Dilution

WB: 1: 500 - 1: 2000

ELISA: 1: 5000 - 1: 20000

Not yet tested in other applications.

Images



Western blot analysis of lysates from K562 cells, primary antibody was diluted at 1:1000, 4°C overnight

Storage

-20°C for 1 year