

## OR1F1 Polyclonal Antibody

### Description

Product type	Primary Antibody
Code	BT-AP12432
Host	Rabbit
Isotype	IgG
Size	20ul, 50ul, 100ul
Immunogen	Synthesized peptide derived from part region of human protein
Mol wt	N/A
Species reactivity	Human, Rat, Mouse
Clonality	Polyclonal
Recommended application	WB, ELISA
Concentration	1 mg/ml
Full name	Olfactory receptor 1F1
Synonyms	Olfactory receptor 1F1 ;Olfactory receptor 16-35;OR16-35;Olfactory receptor 1F10;Olfactory receptor 1F4;Olfactory receptor 1F5;Olfactory receptor 1F6;Olfactory receptor 1F7;Olfactory rec

This product is for research use only, not for use in human, therapeutic or diagnostic procedure.

### Background

Olfactory receptors interact with odorant molecules in the nose, to initiate a neuronal response that triggers the perception of a smell. The olfactory receptor proteins are members of a large family of G-protein-coupled receptors (GPCR) arising from single coding-exon genes. Olfactory receptors share a 7-transmembrane domain structure with many neurotransmitter and hormone receptors and are responsible for the recognition and G protein-mediated transduction of odorant signals. The olfactory receptor gene family is the largest in the genome. The nomenclature assigned to the olfactory receptor genes and proteins for this organism is independent of other organisms.

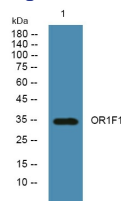
### Recommended Dilution

WB: 1: 500 - 1: 2000

ELISA: 1: 5000 - 1: 20000

Not yet tested in other applications.

### Images



Western blot analysis of lysates from KB cells, primary antibody was diluted at 1:1000, 4°C overnight

### Storage

-20°C for 1 year