

OX2R Polyclonal Antibody

Description

Product type	Primary Antibody
Code	BT-AP12568
Host	Rabbit
Isotype	IgG
Size	20ul, 50ul, 100ul
Immunogen	The antiserum was produced against synthesized peptide derived from human MOX2R. AA range:241-290
Mol wt	36620
Species reactivity	Human, Rat, Mouse
Clonality	Polyclonal
Recommended application	WB, ELISA
Concentration	1 mg/ml
Full name	Cell surface glycoprotein CD200 receptor 1
Synonyms	Cell surface glycoprotein CD200 receptor 1; CD200R1; CD200R; CRTR2; MOX2R; OX2R; Cell surface glycoprotein CD200 receptor 1; CD200 cell surface glycoprotein receptor; Cell surface glycoprotein OX2 receptor 1

This product is for research use only, not for use in human, therapeutic or diagnostic procedure.

Background

This gene encodes a receptor for the OX-2 membrane glycoprotein. Both the receptor and substrate are cell surface glycoproteins containing two immunoglobulin-like domains. This receptor is restricted to the surfaces of myeloid lineage cells and the receptor-substrate interaction may function as a myeloid downregulatory signal. Mouse studies of a related gene suggest that this interaction may control myeloid function in a tissue-specific manner. Alternative splicing of this gene results in multiple transcript variants.

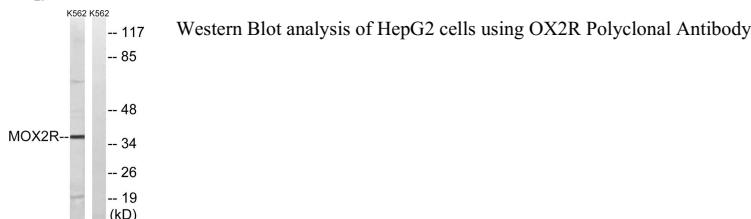
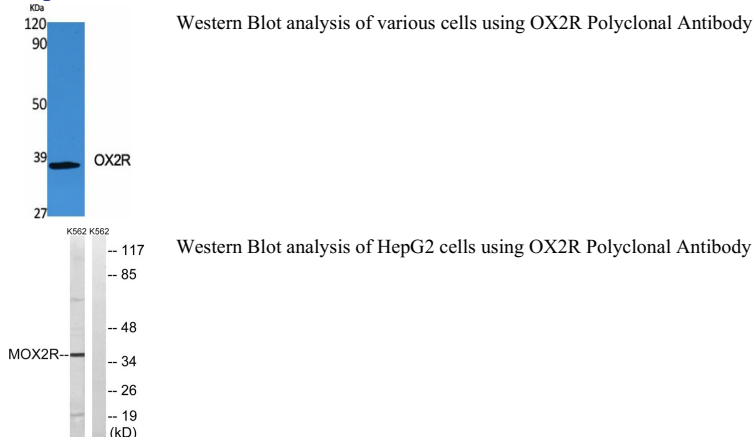
Recommended Dilution

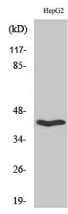
WB: 1: 500 - 1: 2000

ELISA: 1: 40000

Not yet tested in other applications.

Images





Western blot analysis of lysates from K562 cells, using MOX2R Antibody. The lane on the right is blocked with the synthesized peptide.

Storage

-20°C for 1 year

501 Changsheng S Rd, Nanhu Dist, Jiaxing, Zhejiang, China

Tel: 86 21 31007137 | E-mail: save@bt-laboratory.com | www.bt-laboratory.com