

## OXGR1 Polyclonal Antibody

### Description

<b>Product type</b>	Primary Antibody
<b>Code</b>	BT-AP12574
<b>Host</b>	Rabbit
<b>Isotype</b>	IgG
<b>Size</b>	20ul, 50ul, 100ul
<b>Immunogen</b>	Synthesized peptide derived from human protein . at AA range: 130-210
<b>Mol wt</b>	N/A
<b>Species reactivity</b>	Human, Mouse, Rat
<b>Clonality</b>	Polyclonal
<b>Recommended application</b>	WB, ELISA
<b>Concentration</b>	1 mg/ml
<b>Full name</b>	2-oxoglutarate receptor 1
<b>Synonyms</b>	2-oxoglutarate receptor 1 ;Alpha-ketoglutarate receptor 1;G-protein coupled receptor 80;G-protein coupled receptor 99;P2Y purinoceptor 15;P2Y15;P2Y-like GPCR;P2Y-like nucleotide receptor

**This product is for research use only, not for use in human, therapeutic or diagnostic procedure.**

### Background

This gene encodes a G protein-coupled receptor (GPCR) that belongs to the oxoglutarate receptor family within the GPCR superfamily. The encoded protein is activated by the citric acid intermediate, oxoglutarate, as well as several cysteinyl leukotrienes, including leukotrienes E4, C4 and D4, which are implicated in many inflammatory disorders. In mice, a knock-out of this gene leads to middle ear inflammation, changes in the mucosal epithelium, and an increase in fluid behind the eardrum, and is associated with hearing loss. Alternative splicing results in multiple transcript variants.

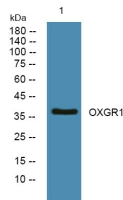
### Recommended Dilution

WB: 1: 500 - 1: 2000

ELISA: 1: 5000 - 1: 20000

Not yet tested in other applications.

### Images



Western blot analysis of lysates from K562 cells, primary antibody was diluted at 1:1000, 4°C overnight

### Storage

-20°C for 1 year