

p120(Phospho Tyr228) Polyclonal Antibody

Description

Product type	Primary Antibody
Code	BT-AP12585
Host	Rabbit
Isotype	IgG
Size	20ul, 50ul, 100ul
Immunogen	The antiserum was produced against synthesized peptide derived from human Catenin-delta1 around the phosphorylation site of Tyr228. AA range:201-250
Mol wt	108170
Species reactivity	Human, Mouse, Rat
Clonality	Polyclonal
Recommended application	WB, IHC-p, IF, ICC, ELISA
Concentration	1 mg/ml
Full name	Catenin delta-1
Synonyms	Catenin delta-1; CTNND1; KIAA0384; Catenin delta-1; Cadherin-associated Src substrate; CAS; p120 catenin; p120;ctn; p120;cas

This product is for research use only, not for use in human, therapeutic or diagnostic procedure.

Background

This gene encodes a member of the Armadillo protein family, which function in adhesion between cells and signal transduction. Multiple translation initiation codons and alternative splicing result in many different isoforms being translated. Not all of the full-length nature of the described transcript variants have been determined. Read-through transcription also exists between this gene and the neighboring upstream thioredoxin-related transmembrane protein 2 (TMX2) gene.

Recommended Dilution

WB: 1: 500 - 1: 2000

IHC-p: 1: 100 - 1: 300

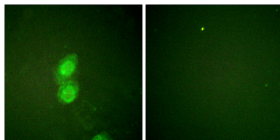
IF: 1: 200 - 1: 1000

ICC: 1: 200 - 1: 1000

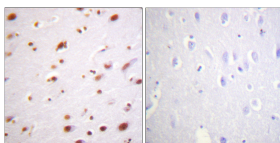
ELISA: 1: 10000

Not yet tested in other applications.

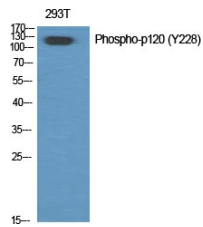
Images



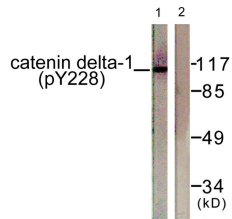
Immunofluorescence analysis of HUVEC cells, using Catenin-delta1 (Phospho-Tyr228) Antibody. The picture on the right is blocked with the phospho peptide.



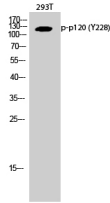
Immunohistochemistry analysis of paraffin-embedded human brain, using Catenin-delta1 (Phospho-Tyr228) Antibody. The picture on the right is blocked with the phospho peptide.



Western Blot analysis of various cells using Phospho-p120 (Y228) Polyclonal Antibody diluted at 1:500



Western Blot analysis of 293T cells using Phospho-p120 (Y228) Polyclonal Antibody diluted at 1:500



Western blot analysis of lysates from HUVEC cells, using Catenin-delta1 (Phospho-Tyr228) Antibody. The lane on the right is blocked with the phospho peptide.

Storage

-20°C for 1 year

501 Changsheng S Rd, Nanhu Dist, Jiaxing, Zhejiang, China

Tel: 86 21 31007137 | E-mail: save@bt-laboratory.com | www.bt-laboratory.com