

## SEK1/MKK4(Phospho-Ser257/Thr261) Rabbit Polyclonal Antibody

### Description

<b>Product type</b>	Primary Antibody
<b>Code</b>	BT-AP12592
<b>Host</b>	Rabbit
<b>Isotype</b>	IgG
<b>Size</b>	20ul, 50ul, 100ul
<b>Immunogen</b>	Synthesized phosho peptide around human SEK1 (Ser257 and Thr261)
<b>Mol wt</b>	N/A
<b>Species reactivity</b>	Human, Mouse, Rat
<b>Clonality</b>	Polyclonal
<b>Recommended application</b>	WB
<b>Concentration</b>	1 mg/ml
<b>Full name</b>	SEK1/MKK4
<b>Synonyms</b>	SEK1/MKK4 ;Ser257/Thr261; Dual specificity mitogen-activated protein kinase kinase 4; MAP kinase kinase 4; MAPKK 4; EC 2.7.12.2; JNK-activating kinase 1; MAPK/ERK kinase 4; MEK 4; SAPK/ERK kinase 1; SEK1; Stress-activated protein kinase kinase 1; SAPK kinase 1; SAPKK-1; SAPKK1; c-Jun N-terminal kinase kinase 1; JNKK

This product is for research use only, not for use in human, therapeutic or diagnostic procedure.

### Background

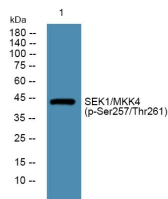
This gene encodes a member of the mitogen-activated protein kinase (MAPK) family. Members of this family act as an integration point for multiple biochemical signals and are involved in a wide variety of cellular processes such as proliferation| differentiation| transcription regulation| and development. They form a three-tiered signaling module composed of MAPKKKs| MAPKKs| and MAPKs. This protein is phosphorylated at serine and threonine residues by MAPKKKs and subsequently phosphorylates downstream MAPK targets at threonine and tyrosine residues. A similar protein in mouse has been reported to play a role in liver organogenesis. A pseudogene of this gene is located on the long arm of chromosome X. Alternative splicing results in multiple transcript variants.

### Recommended Dilution

WB: 1: 1000 - 1: 2000

Not yet tested in other applications.

### Images



Western blot analysis of lysates from K562 cells, primary antibody was diluted at 1:1000, 4°C overnight

## Storage

-20°C for 1 year

501 Changsheng S Rd, Nanhu Dist, Jiaxing, Zhejiang, China

Tel: 86 21 31007137 | E-mail: [save@bt-laboratory.com](mailto:save@bt-laboratory.com) | [www.bt-laboratory.com](http://www.bt-laboratory.com)