

SEM3G Rabbit Polyclonal Antibody

Description

Product type	Primary Antibody
Code	BT-AP12598
Host	Rabbit
Isotype	IgG
Size	20ul, 50ul, 100ul
Immunogen	Synthesized peptide derived from human SEM3G
Mol wt	86020
Species reactivity	Human, Mouse
Clonality	Polyclonal
Recommended application	WB
Concentration	1 mg/ml
Full name	SEM3G
Synonyms	SEM3G

This product is for research use only, not for use in human, therapeutic or diagnostic procedure.

Background

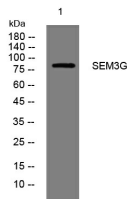
The transcription of this gene is activated by PPAR-gamma and the resulting protein product plays a role in endothelial cell migration. Expression of this gene also inhibits tumor cell migration and invasion.

Recommended Dilution

WB: 1: 500 - 1: 2000

Not yet tested in other applications.

Images



Storage

-20°C for 1 year

501 Changsheng S Rd, Nanhu Dist, Jiaxing, Zhejiang, China

Tel: 86 21 31007137 | E-mail: save@bt-laboratory.com | www.bt-laboratory.com