

SEM4F Rabbit Polyclonal Antibody

Description

Product type	Primary Antibody
Code	BT-AP12599
Host	Rabbit
Isotype	IgG
Size	20ul, 50ul, 100ul
Immunogen	Synthesized peptide derived from human SEM4F
Mol wt	N/A
Species reactivity	Human, Mouse, Rat
Clonality	Polyclonal
Recommended application	WB
Concentration	1 mg/ml
Full name	SEM4F
Synonyms	SEM4F; Semaphorin-4F; Semaphorin-M; Sema M; Semaphorin-W; Sema W

This product is for research use only, not for use in human, therapeutic or diagnostic procedure.

Background

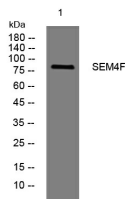
This gene encodes a transmembrane class IV semaphorin family protein| which plays a role in neural development. This gene may be involved in neurogenesis in prostate cancer| the development of neurofibromas| and breast cancer tumorigenesis. Alternative splicing results in multiple transcript variants.

Recommended Dilution

WB: 1: 500 - 1: 2000

Not yet tested in other applications.

Images



Western blot analysis of lysates from SH-SY5Y cells, primary antibody was diluted at 1:1000, 4°C overnight

Storage

-20°C for 1 year

501 Changsheng S Rd, Nanhu Dist, Jiaxing, Zhejiang, China

Tel: 86 21 31007137 | E-mail: save@bt-laboratory.com | www.bt-laboratory.com