

SEMG1 Rabbit Polyclonal Antibody

Description

Product type	Primary Antibody
Code	BT-AP12606
Host	Rabbit
Isotype	IgG
Size	20ul, 50ul, 100ul
Immunogen	Synthesized peptide derived from human SEMG1
Mol wt	50820
Species reactivity	Human, Rat, Mouse
Clonality	Polyclonal
Recommended application	WB
Concentration	1 mg/ml
Full name	SEMG1
Synonyms	SEMG1

This product is for research use only, not for use in human, therapeutic or diagnostic procedure.

Background

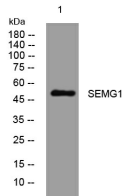
The protein encoded by this gene is the predominant protein in semen. The encoded secreted protein is involved in the formation of a gel matrix that encases ejaculated spermatozoa. This preproprotein is proteolytically processed by the prostate-specific antigen (PSA) protease to generate multiple peptide products that exhibit distinct functions. One of these peptides [SgI-29] is an antimicrobial peptide with antibacterial activity. This proteolysis process also breaks down the gel matrix and allows the spermatozoa to move more freely. This gene and another similar semenogelin gene are present in a gene cluster on chromosome 20.

Recommended Dilution

WB: 1: 500 - 1: 2000

Not yet tested in other applications.

Images



Western blot analysis of lysates from KB cells, primary antibody was diluted at 1:1000, 4°C overnight

Storage

-20°C for 1 year