

## SG11A Rabbit Polyclonal Antibody

### Description

<b>Product type</b>	Primary Antibody
<b>Code</b>	BT-AP12634
<b>Host</b>	Rabbit
<b>Isotype</b>	IgG
<b>Size</b>	20ul, 50ul, 100ul
<b>Immunogen</b>	Synthesized peptide derived from human SG11A
<b>Mol wt</b>	13530
<b>Species reactivity</b>	Human, Rat, Mouse
<b>Clonality</b>	Polyclonal
<b>Recommended application</b>	WB
<b>Concentration</b>	1 mg/ml
<b>Full name</b>	SG11A
<b>Synonyms</b>	SG11A

This product is for research use only, not for use in human, therapeutic or diagnostic procedure.

### Background

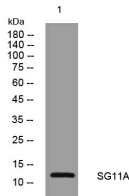
This gene encodes several androgen-dependent epididymis-specific secretory proteins. The specific functions of these proteins have not been determined but they are thought to be involved in sperm maturation. Some of the isoforms contain regions of similarity to beta-defensins a family of antimicrobial peptides. The gene is located on chromosome 8p23 near the defensin gene cluster. Alternative splicing of this gene results in seven transcript variants encoding different isoforms. Two different N-terminal and five different C-terminal protein sequences are encoded by the splice variants. Two additional variants have been described but their full length sequences have not been determined.

### Recommended Dilution

WB: 1: 500 - 1: 2000

Not yet tested in other applications.

### Images



Western blot analysis of lysates from 293T cells, primary antibody was diluted at 1:1000, 4°C overnight

### Storage

-20°C for 1 year