

p70 S6 Kinase alpha(Phospho Thr229) Polyclonal Antibody

Description

Product type	Primary Antibody
Code	BT-AP12695
Host	Rabbit
Isotype	IgG
Size	20ul, 50ul, 100ul
Immunogen	The antiserum was produced against synthesized peptide derived from human p70 S6 Kinase around the phosphorylation site of Thr229. AA range:195-244
Mol wt	59140
Species reactivity	Human, Mouse, Rat
Clonality	Polyclonal
Recommended application	WB, IHC-p, IF, ICC, ELISA
Concentration	1 mg/ml
Full name	Ribosomal protein S6 kinase beta-1
Synonyms	Ribosomal protein S6 kinase beta-1; RPS6KB1; STK14A; Ribosomal protein S6 kinase beta-1; S6K-beta-1; S6K1; 70 kDa ribosomal protein S6 kinase 1; P70S6K1; p70-S6K 1; Ribosomal protein S6 kinase I; Serine/threonine-protein kinase 14A; p70 ribosomal S6 kinase alpha; p70 S6 kinas

This product is for research use only, not for use in human, therapeutic or diagnostic procedure.

Background

This gene encodes a member of the ribosomal S6 kinase family of serine/threonine kinases. The encoded protein responds to mTOR (mammalian target of rapamycin) signaling to promote protein synthesis, cell growth, and cell proliferation. Activity of this gene has been associated with human cancer. Alternatively spliced transcript variants have been observed. The use of alternative translation start sites results in isoforms with longer or shorter N-termini which may differ in their subcellular localizations. There are two pseudogenes for this gene on chromosome 17.

Recommended Dilution

WB: 1: 500 - 1: 2000

IHC-p: 1: 100 - 1: 300

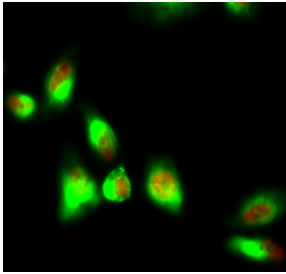
IF: 1: 200 - 1: 1000

ICC: 1: 200 - 1: 1000

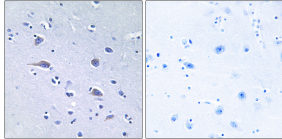
ELISA: 1: 5000

Not yet tested in other applications.

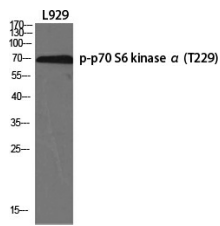
Images



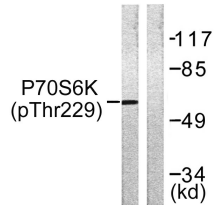
Immunofluorescence analysis of HeLa cell. p70 S6 kinase α (phospho Thr229) Polyclonal Antibody(Red) was diluted at 1:200(4°C overnight). Caspase-8 Monoclonal Antibody(2G12)(Green) was diluted at 1:200(4°C overnight).



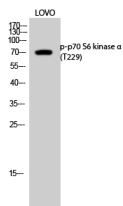
Immunohistochemistry analysis of paraffin-embedded human brain, using p70 S6 Kinase (Phospho-Thr229) Antibody. The picture on the right is blocked with the phospho peptide.



Western Blot analysis of various cells using Phospho-p70 S6 kinase α (T229) Polyclonal Antibody diluted at 1:500



Western Blot analysis of LOVO cells using Phospho-p70 S6 kinase α (T229) Polyclonal Antibody diluted at 1:500



Western blot analysis of lysates from Jurkat cells, using p70 S6 Kinase (Phospho-Thr229) Antibody. The lane on the right is blocked with the phospho peptide.

Storage

-20°C for 1 year

501 Changsheng S Rd, Nanhu Dist, Jiaxing, Zhejiang, China

Tel: 86 21 31007137 | E-mail: save@bt-laboratory.com | www.bt-laboratory.com