

SOLH2 Rabbit Polyclonal Antibody

Description

Product type	Primary Antibody
Code	BT-AP12720
Host	Rabbit
Isotype	IgG
Size	20ul, 50ul, 100ul
Immunogen	Synthesized peptide derived from human SOLH2
Mol wt	46750
Species reactivity	Human, Mouse, Rat
Clonality	Polyclonal
Recommended application	WB
Concentration	1 mg/ml
Full name	SOLH2
Synonyms	SOLH2

This product is for research use only, not for use in human, therapeutic or diagnostic procedure.

Background

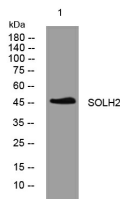
This gene encodes one of testis-specific transcription factors which are essential for spermatogenesis| oogenesis and folliculogenesis. This gene is located on chromosome 13. The proteins encoded by this gene and another testis-specific transcription factor| SOHLH1| can form heterodimers| in addition to homodimers. There is a read-through locus (GeneID: 100526761) that shares sequence identity with this gene and the upstream CCDC169 (GeneID: 728591). Alternatively spliced transcript variants encoding different isoforms have been found for this gene.

Recommended Dilution

WB: 1: 500 - 1: 2000

Not yet tested in other applications.

Images



Western blot analysis of lysates from AD293 cells, primary antibody was diluted at 1:1000, 4°C overnight

Storage

-20°C for 1 year