

PACA Polyclonal Antibody

Description

Product type	Primary Antibody
Code	BT-AP12726
Host	Rabbit
Isotype	IgG
Size	20ul, 50ul, 100ul
Immunogen	Synthesized peptide derived from part region of human protein
Mol wt	N/A
Species reactivity	Human, Mouse, Rat
Clonality	Polyclonal
Recommended application	WB, ELISA
Concentration	1 mg/ml
Full name	Pituitary adenylate cyclase-activating polypeptide
Synonyms	Pituitary adenylate cyclase-activating polypeptide ;PACAP [Cleaved into: PACAP-related peptide ;PRP-48; Pituitary adenylate cyclase-activating polypeptide 27 ;PACAP-27;PACAP27; Pituitary adenylat

This product is for research use only, not for use in human, therapeutic or diagnostic procedure.

Background

This gene encodes a secreted proprotein that is further processed into multiple mature peptides. These peptides stimulate adenylate cyclase and increase cyclic adenosine monophosphate (cAMP) levels, resulting in the transcriptional activation of target genes. The products of this gene are key mediators of neuroendocrine stress responses. Alternative splicing results in multiple transcript variants.

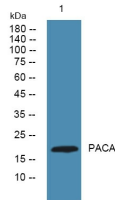
Recommended Dilution

WB: 1: 500 - 1: 2000

ELISA: 1: 5000 - 1: 20000

Not yet tested in other applications.

Images



Western blot analysis of lysates from K562 cells, primary antibody was diluted at 1:1000, 4°C overnight

Storage

-20°C for 1 year