

SPAST Rabbit Polyclonal Antibody

Description

Product type	Primary Antibody
Code	BT-AP12732
Host	Rabbit
Isotype	IgG
Size	20ul, 50ul, 100ul
Immunogen	Synthesized peptide derived from human SPAST
Mol wt	67760
Species reactivity	Human, Mouse, Rat
Clonality	Polyclonal
Recommended application	WB
Concentration	1 mg/ml
Full name	SPAST
Synonyms	SPAST

This product is for research use only, not for use in human, therapeutic or diagnostic procedure.

Background

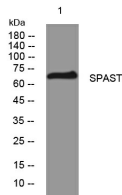
This gene encodes a member of the AAA (ATPases associated with a variety of cellular activities) protein family. Members of this protein family share an ATPase domain and have roles in diverse cellular processes including membrane trafficking| intracellular motility| organelle biogenesis| protein folding| and proteolysis. The encoded ATPase may be involved in the assembly or function of nuclear protein complexes. Two transcript variants encoding distinct isoforms have been identified for this gene. Other alternative splice variants have been described but their full length sequences have not been determined. Mutations associated with this gene cause the most frequent form of autosomal dominant spastic paraplegia 4.

Recommended Dilution

WB: 1: 500 - 1: 2000

Not yet tested in other applications.

Images



Western blot analysis of lysates from KB cells, primary antibody was diluted at 1:1000, 4°C overnight

Storage

-20°C for 1 year