

SPE39 Rabbit Polyclonal Antibody

Description

Product type	Primary Antibody
Code	BT-AP12738
Host	Rabbit
Isotype	IgG
Size	20ul, 50ul, 100ul
Immunogen	Synthesized peptide derived from human SPE39
Mol wt	54230
Species reactivity	Human, Mouse, Rat
Clonality	Polyclonal
Recommended application	WB
Concentration	1 mg/ml
Full name	SPE39
Synonyms	SPE39

This product is for research use only, not for use in human, therapeutic or diagnostic procedure.

Background

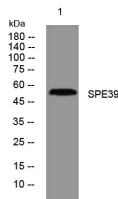
This gene encodes a protein involved in the sorting of lysosomal proteins. Mutations in this gene are associated with ARCS2 (arthrogryposis| renal dysfunction| and cholestasis-2). Alternative splicing results in multiple transcript variants.

Recommended Dilution

WB: 1: 500 - 1: 2000

Not yet tested in other applications.

Images



Western blot analysis of lysates from HpeG2 cells, primary antibody was diluted at 1:1000, 4°C overnight

Storage

-20°C for 1 year

501 Changsheng S Rd, Nanhu Dist, Jiaxing, Zhejiang, China

Tel: 86 21 31007137 | E-mail: save@bt-laboratory.com | www.bt-laboratory.com