

## PAIRB Polyclonal Antibody

### Description

<b>Product type</b>	Primary Antibody
<b>Code</b>	BT-AP12740
<b>Host</b>	Rabbit
<b>Isotype</b>	IgG
<b>Size</b>	20ul, 50ul, 100ul
<b>Immunogen</b>	Synthesized peptide derived from human protein . at AA range: 60-140
<b>Mol wt</b>	N/A
<b>Species reactivity</b>	Human, Rat, Mouse
<b>Clonality</b>	Polyclonal
<b>Recommended application</b>	WB, ELISA
<b>Concentration</b>	1 mg/ml
<b>Full name</b>	Plasminogen activator inhibitor 1 RNA-binding protein
<b>Synonyms</b>	Plasminogen activator inhibitor 1 RNA-binding protein ;PAI1 RNA-binding protein 1;PAI-RBP1;SERPINE1 mRNA-binding protein 1

**This product is for research use only, not for use in human, therapeutic or diagnostic procedure.**

### Background

May play a role in the regulation of mRNA stability. Binds to the 3'-most 134 nt of the SERPINE1/PAI1 mRNA, a region which confers cyclic nucleotide regulation of message decay.,subcellular location:Also found in perinuclear regions.,subunit:Interacts with CHD3 and TDRD3.,tissue specificity:Expressed at high level in the heart, skeletal muscle and kidney, and at low levels in placenta, liver and brain.,

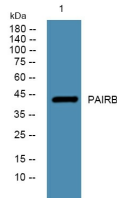
### Recommended Dilution

WB: 1: 500 - 1: 2000

ELISA: 1: 5000 - 1: 20000

Not yet tested in other applications.

### Images



Western blot analysis of lysates from K562 cells, primary antibody was diluted at 1:1000, 4°C overnight

### Storage

-20°C for 1 year