

PAK alpha(Phospho Ser199) Polyclonal Antibody

Description

Product type	Primary Antibody
Code	BT-AP12746
Host	Rabbit
Isotype	IgG
Size	20ul, 50ul, 100ul
Immunogen	The antiserum was produced against synthesized peptide derived from human PAK1 around the phosphorylation site of Ser199. AA range:165-214
Mol wt	60647
Species reactivity	Human, Mouse, Rat, Monkey
Clonality	Polyclonal
Recommended application	WB, IHC-p, IF, ELISA
Concentration	1 mg/ml
Full name	Serine/threonine-protein kinase PAK 1
Synonyms	Serine/threonine-protein kinase PAK 1; PAK1; Serine/threonine-protein kinase PAK 1; Alpha-PAK; p21-activated kinase 1; PAK-1; p65-PAK

This product is for research use only, not for use in human, therapeutic or diagnostic procedure.

Background

This gene encodes a family member of serine/threonine p21-activating kinases, known as PAK proteins. These proteins are critical effectors that link RhoGTPases to cytoskeleton reorganization and nuclear signaling, and they serve as targets for the small GTP binding proteins Cdc42 and Rac. This specific family member regulates cell motility and morphology. Alternatively spliced transcript variants encoding different isoforms have been found for this gene.

Recommended Dilution

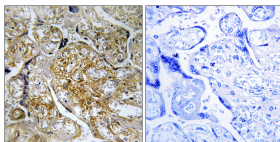
WB: 1: 500 - 1: 2000

IHC-p: 1: 100 - 1: 300

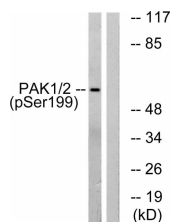
ELISA: 1: 10000

Not yet tested in other applications.

Images



Immunohistochemistry analysis of paraffin-embedded human placenta, using PAK1 (Phospho-Ser199) Antibody. The picture on the right is blocked with the phospho peptide.



Western blot analysis of lysates from LOVO cells treated with starved 24h, using PAK1 (Phospho-Ser199) Antibody. The lane on the right is blocked with the phospho peptide.

Storage

-20°C for 1 year

501 Changsheng S Rd, Nanhu Dist, Jiaxing, Zhejiang, China

Tel: 86 21 31007137 | E-mail: save@bt-laboratory.com | www.bt-laboratory.com