

PAK alpha/beta / gamma(Phospho Thr423/402/421) Polyclonal Antibody

Description

Product type	Primary Antibody
Code	BT-AP12752
Host	Rabbit
Isotype	IgG
Size	20ul, 50ul, 100ul
Immunogen	The antiserum was produced against synthesized peptide derived from human PAK1/2/3 around the phosphorylation site of Thr423/402/421. AA range:391-440
Mol wt	60647;62310
Species reactivity	Human, Mouse, Rat
Clonality	Polyclonal
Recommended application	WB, IHC-p, IF, ELISA
Concentration	1 mg/ml
Full name	Serine/threonine-protein kinase PAK 1/Serine/threonine-protein kinase PAK 2/Serine/threonine-protein kinase PAK 3
Synonyms	Serine/threonine-protein kinase PAK 1/Serine/threonine-protein kinase PAK 2/Serine/threonine-protein kinase PAK 3; PAK1; Serine/threonine-protein kinase PAK 1; Alpha-PAK; p21-activated kinase 1; PAK-1; p65-PAK; PAK2; Serine/threonine-protein kinase PAK 2; Gamma-PAK; PAK65; S6/H4 kinase; p21-activated kinase 2; PAK-2; p58; PAK3; OPHN3; Serine/threonine-p

This product is for research use only, not for use in human, therapeutic or diagnostic procedure.

Background

This gene encodes a family member of serine/threonine p21-activating kinases, known as PAK proteins. These proteins are critical effectors that link RhoGTPases to cytoskeleton reorganization and nuclear signaling, and they serve as targets for the small GTP binding proteins Cdc42 and Rac. This specific family member regulates cell motility and morphology. Alternatively spliced transcript variants encoding different isoforms have been found for this gene.

Recommended Dilution

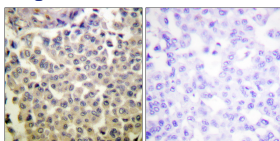
WB: 1: 500 - 1: 2000

IHC-p: 1: 100 - 1: 300

ELISA: 1: 5000

Not yet tested in other applications.

Images



Immunohistochemistry analysis of paraffin-embedded human breast carcinoma, using PAK1/2/3 (Phospho-Thr423/402/421) Antibody. The picture on the right is blocked with the phospho peptide.

Storage

-20°C for 1 year

501 Changsheng S Rd, Nanhu Dist, Jiaxing, Zhejiang, China

Tel: 86 21 31007137 | E-mail: save@bt-laboratory.com | www.bt-laboratory.com