

PAK beta(Phospho Ser154) Polyclonal Antibody

Description

Product type	Primary Antibody
Code	BT-AP12755
Host	Rabbit
Isotype	IgG
Size	20ul, 50ul, 100ul
Immunogen	The antiserum was produced against synthesized peptide derived from human PAK3 around the phosphorylation site of Ser154. AA range:121-170
Mol wt	62310
Species reactivity	Human, Mouse, Rat
Clonality	Polyclonal
Recommended application	WB, IHC-p, IF, ELISA
Concentration	1 mg/ml
Full name	Serine/threonine-protein kinase PAK 3
Synonyms	Serine/threonine-protein kinase PAK 3; PAK3; OPHN3; Serine/threonine-protein kinase PAK 3; Beta-PAK; Oligophrenin-3; p21-activated kinase 3; PAK-3

This product is for research use only, not for use in human, therapeutic or diagnostic procedure.

Background

The protein encoded by this gene is a serine-threonine kinase and forms an activated complex with GTP-bound RAS-like (P21), CDC2 and RAC1. This protein may be necessary for dendritic development and for the rapid cytoskeletal reorganization in dendritic spines associated with synaptic plasticity. Defects in this gene are the cause of non-syndromic mental retardation X-linked type 30 (MRX30), also called X-linked mental retardation type 47 (MRX47). Alternatively spliced transcript variants encoding different isoforms have been identified.

Recommended Dilution

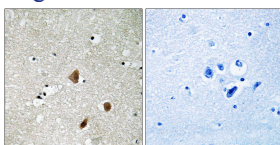
WB: 1: 500 - 1: 2000

IHC-p: 1: 100 - 1: 300

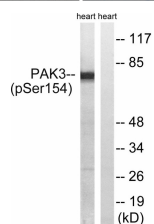
ELISA: 1: 20000

Not yet tested in other applications.

Images



Immunohistochemistry analysis of paraffin-embedded human brain, using PAK3 (Phospho-Ser154) Antibody. The picture on the right is blocked with the phospho peptide.



Western blot analysis of lysates from rat heart, using PAK3 (Phospho-Ser154) Antibody. The lane on the right is blocked with the phospho peptide.

Storage

-20°C for 1 year

501 Changsheng S Rd, Nanhu Dist, Jiaxing, Zhejiang, China

Tel: 86 21 31007137 | E-mail: save@bt-laboratory.com | www.bt-laboratory.com