

PAR1 (Cleaved-Ser42) Polyclonal Antibody

Description

Product type	Primary Antibody
Code	BT-AP12775
Host	Rabbit
Isotype	IgG
Size	20ul, 50ul, 100ul
Immunogen	Synthesized peptide derived from human PAR1 (Cleaved-Ser42) Polyclonal
Mol wt	N/A
Species reactivity	Human, Mouse, Rat
Clonality	Polyclonal
Recommended application	WB, ELISA
Concentration	1 mg/ml
Full name	Proteinase-activated receptor 1
Synonyms	Proteinase-activated receptor 1 ;PAR-1;Coagulation factor II receptor;Thrombin receptor; Proteinase-activated receptor 1; PAR-1; Coagulation factor II receptor; Thrombin receptor

This product is for research use only, not for use in human, therapeutic or diagnostic procedure.

Background

Coagulation factor II receptor is a 7-transmembrane receptor involved in the regulation of thrombotic response. Proteolytic cleavage leads to the activation of the receptor. F2R is a G-protein coupled receptor family member. Alternative splicing results in multiple transcript variants.

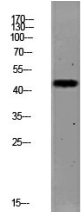
Recommended Dilution

WB: 1: 500 - 1: 2000

ELISA: 1: 10000 - 1: 20000

Not yet tested in other applications.

Images



Western blot analysis of MCF-7 lysate, antibody was diluted at 1000. Secondary antibody was diluted at 1:20000

Storage

-20°C for 1 year