

PAR16 Polyclonal Antibody

Description

Product type	Primary Antibody
Code	BT-AP12781
Host	Rabbit
Isotype	IgG
Size	20ul, 50ul, 100ul
Immunogen	Synthesized peptide derived from part region of human protein
Mol wt	N/A
Species reactivity	Human, Rat, Mouse
Clonality	Polyclonal
Recommended application	WB, ELISA
Concentration	1 mg/ml
Full name	Mono [ADP-ribose] polymerase PARP16
Synonyms	Mono [ADP-ribose] polymerase PARP16 ;EC 2.4.2.31;ADP-ribosyltransferase diphtheria toxin-like 15;ARTD15;Poly [ADP-ribose] polymerase 16;PARP-16

This product is for research use only, not for use in human, therapeutic or diagnostic procedure.

Background

Catalytic activity: $\text{NAD}^{(+)} + (\text{ADP-D-ribose})_n\text{-acceptor} = \text{nicotinamide} + (\text{ADP-D-ribose})_{(n+1)}\text{-acceptor}$., Contains 1 PARP catalytic domain.,

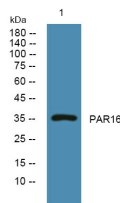
Recommended Dilution

WB: 1: 500 - 1: 2000

ELISA: 1: 5000 - 1: 20000

Not yet tested in other applications.

Images



Western blot analysis of lysates from PC12 cells, primary antibody was diluted at 1:1000, 4°C overnight

Storage

-20°C for 1 year