

PAR6G Polyclonal Antibody

Description

Product type	Primary Antibody
Code	BT-AP12784
Host	Rabbit
Isotype	IgG
Size	20ul, 50ul, 100ul
Immunogen	Synthesized peptide derived from human protein . at AA range: 240-320
Mol wt	N/A
Species reactivity	Human, Mouse
Clonality	Polyclonal
Recommended application	WB, ELISA
Concentration	1 mg/ml
Full name	Partitioning defective 6 homolog gamma
Synonyms	Partitioning defective 6 homolog gamma ;PAR-6 gamma;PAR6D

This product is for research use only, not for use in human, therapeutic or diagnostic procedure.

Background

The pseudo-CRIB domain together with the PDZ domain is required for the interaction with Rho small GTPases.,Adapter protein involved in asymmetrical cell division and cell polarization processes. May play a role in the formation of epithelial tight junctions. The PARD6-PARD3 complex links GTP-bound Rho small GTPases to atypical protein kinase C proteins.,Belongs to the PAR6 family.,Contains 1 OPR domain.,Contains 1 PDZ (DHR) domain.,Contains 1 pseudo-CRIB domain.,subunit:Interacts with PARD3 (Probable). Interacts with GTP-bound forms of CDC42, ARHQ/TC10 and RAC1. Interacts with the N-terminal part of PRKCI and PRKCZ.,tissue specificity:Widely expressed, with a higher expression in fetal and adult kidney.,

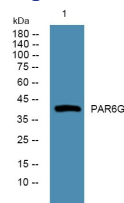
Recommended Dilution

WB: 1: 500 - 1: 2000

ELISA: 1: 5000 - 1: 20000

Not yet tested in other applications.

Images



Western blot analysis of lysates from HCT116 cells, primary antibody was diluted at 1:1000, 4°C overnight

Storage

-20°C for 1 year