

## Parathyroid hormone/parathyroid hormone-related peptide Receptor Polyclonal Antibody

### Description

Product type	Primary Antibody
Code	BT-AP12786
Host	Rabbit
Isotype	IgG
Size	20ul, 50ul, 100ul
Immunogen	Synthetic peptide from human protein at AA range: 46-122
Mol wt	N/A
Species reactivity	Human, Rat, Mouse
Clonality	Polyclonal
Recommended application	WB, IHC-p, IF, ELISA
Concentration	1 mg/ml
Full name	Parathyroid hormone/parathyroid hormone-related peptide receptor
Synonyms	Parathyroid hormone/parathyroid hormone-related peptide receptor; Parathyroid hormone/parathyroid hormone-related peptide receptor; PTH/PTHrP type I receptor; PTH/PTHr receptor; Parathyroid hormone 1 receptor; PTH1 receptor

**This product is for research use only, not for use in human, therapeutic or diagnostic procedure.**

### Background

The protein encoded by this gene is a member of the G-protein coupled receptor family 2. This protein is a receptor for parathyroid hormone (PTH) and for parathyroid hormone-like hormone (PTHrP). The activity of this receptor is mediated by G proteins which activate adenylyl cyclase and also a phosphatidylinositol-calcium second messenger system. Defects in this receptor are known to be the cause of Jansen's metaphyseal chondrodysplasia (JMC), chondrodysplasia Blomstrand type (BOCD), as well as enchondromatosis. Two transcript variants encoding the same protein have been found for this gene.

### Recommended Dilution

WB: 1: 500 - 1: 2000

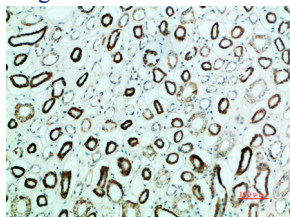
IHC-p: 1: 500 - 1: 200

ELISA: 1: 20000

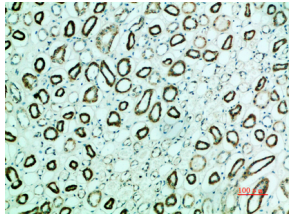
ELISA: 1: 10000 - 1: 20000

Not yet tested in other applications.

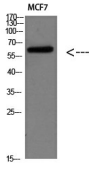
### Images



Immunohistochemical analysis of paraffin-embedded human-kidney, antibody was diluted at 1:200



Immunohistochemical analysis of paraffin-embedded human-kidney, antibody was diluted at 1:200



Western blot analysis of MCF7 Cell Lysate, antibody was diluted at 1:1000. Secondary antibody was diluted at 1:20000

### Storage

-20°C for 1 year

501 Changsheng S Rd, Nanhu Dist, Jiaxing, Zhejiang, China

Tel: 86 21 31007137 | E-mail: [save@bt-laboratory.com](mailto:save@bt-laboratory.com) | [www.bt-laboratory.com](http://www.bt-laboratory.com)