

Parkin(Phospho Ser131) Polyclonal Antibody

Description

Product type	Primary Antibody
Code	BT-AP12790
Host	Rabbit
Isotype	IgG
Size	20ul, 50ul, 100ul
Immunogen	The antiserum was produced against synthesized peptide derived from human Parkin around the phosphorylation site of Ser131. AA range:101-150
Mol wt	51641
Species reactivity	Human, Rat, Mouse
Clonality	Polyclonal
Recommended application	WB, IHC-p, IF, ELISA
Concentration	1 mg/ml
Full name	E3 ubiquitin-protein ligase parkin
Synonyms	E3 ubiquitin-protein ligase parkin; PARK2; PRKN; E3 ubiquitin-protein ligase parkin; Parkinson juvenile disease protein 2; Parkinson disease protein 2

This product is for research use only, not for use in human, therapeutic or diagnostic procedure.

Background

The precise function of this gene is unknown; however, the encoded protein is a component of a multiprotein E3 ubiquitin ligase complex that mediates the targeting of substrate proteins for proteasomal degradation. Mutations in this gene are known to cause Parkinson disease and autosomal recessive juvenile Parkinson disease. Alternative splicing of this gene produces multiple transcript variants encoding distinct isoforms. Additional splice variants of this gene have been described but currently lack transcript support.

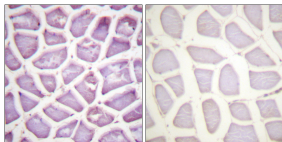
Recommended Dilution

IHC-p: 1: 100 - 1: 300

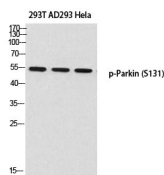
ELISA: 1: 20000

Not yet tested in other applications.

Images



Immunohistochemistry analysis of paraffin-embedded human skeletal muscle, using Parkin (Phospho-Ser131) Antibody. The picture on the right is blocked with the phospho peptide.



Western blot analysis of 293T AD293 Hela using p-Parkin (S131) antibody. Antibody was diluted at 1:500

Storage

-20°C for 1 year

501 Changsheng S Rd, Nanhu Dist, Jiaxing, Zhejiang, China

Tel: 86 21 31007137 | E-mail: save@bt-laboratory.com | www.bt-laboratory.com