

PARP-1 (Acetyl-K521) Polyclonal Antibody

Description

Product type	Primary Antibody
Code	BT-AP12792
Host	Rabbit
Isotype	IgG
Size	20ul, 50ul, 100ul
Immunogen	Synthesized Acetyl peptide derived from human PARP-1. at AA range: K521
Mol wt	N/A
Species reactivity	Human, Mouse, Rat
Clonality	Polyclonal
Recommended application	WB, ELISA
Concentration	1 mg/ml
Full name	PARP-1
Synonyms	PARP-1 ; Poly [ADP-ribose; polymerase 1; PARP-1; EC 2.4.2.30; ADP-ribosyltransferase diphtheria toxin-like 1; ARTD1; NAD ⁺ ADP-ribosyltransferase 1; ADPRT 1; Poly[ADP-ribose; synthase 1

This product is for research use only, not for use in human, therapeutic or diagnostic procedure.

Background

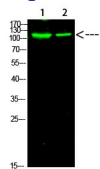
This gene encodes a chromatin-associated enzyme, poly(ADP-ribose)transferase, which modifies various nuclear proteins by poly(ADP-ribose)ylation. The modification is dependent on DNA and is involved in the regulation of various important cellular processes such as differentiation, proliferation, and tumor transformation and also in the regulation of the molecular events involved in the recovery of cell from DNA damage. In addition, this enzyme may be the site of mutation in Fanconi anemia, and may participate in the pathophysiology of type I diabetes.

Recommended Dilution

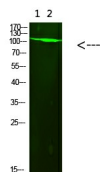
WB: 1: 1000

Not yet tested in other applications.

Images



Western Blot analysis of 1,mouse-heart 2,mouse-brain cells using primary antibody diluted at 1:1000(4°C overnight). Secondary antibody:Goat Anti-rabbit IgG IRDye 800(diluted at 1:5000, 25°C, 1 hour)



Western Blot analysis of 1,293t 2,mouse-brain cells using primary antibody diluted at 1:1000(4°C overnight). Secondary antibody:Goat Anti-rabbit IgG IRDye 800(diluted at 1:5000, 25°C, 1 hour)

Storage

-20°C for 1 year

501 Changsheng S Rd, Nanhu Dist, Jiaxing, Zhejiang, China

Tel: 86 21 31007137 | E-mail: save@bt-laboratory.com | www.bt-laboratory.com