

SRGP2 Rabbit Polyclonal Antibody

Description

Product type	Primary Antibody
Code	BT-AP12804
Host	Rabbit
Isotype	IgG
Size	20ul, 50ul, 100ul
Immunogen	Synthesized peptide derived from human SRGP2
Mol wt	117810
Species reactivity	Human, Mouse, Rat
Clonality	Polyclonal
Recommended application	WB
Concentration	1 mg/ml
Full name	SRGP2
Synonyms	SRGP2

This product is for research use only, not for use in human, therapeutic or diagnostic procedure.

Background

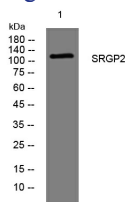
This locus encodes a member of the SLIT-ROBO Rho GTPase activating protein family. The encoded protein stimulates GTPase activity of Rac1 and plays a role in cortical neuron development. This locus has several paralogs on human chromosome 1 resulting from segmental duplication. While this locus itself is conserved among various species the paralogs are found only in the genus Homo and not in the genomes of non-human great apes. Alternatively spliced transcript variants have been described for this locus.

Recommended Dilution

WB: 1: 500 - 1: 2000

Not yet tested in other applications.

Images



Western blot analysis of lysates from CACO2 cells, primary antibody was diluted at 1:1000, 4°C overnight

Storage

-20°C for 1 year