

Paxillin(Phospho Tyr31) Polyclonal Antibody

Description

Product type	Primary Antibody
Code	BT-AP12814
Host	Rabbit
Isotype	IgG
Size	20ul, 50ul, 100ul
Immunogen	The antiserum was produced against synthesized peptide derived from human Paxillin around the phosphorylation site of Tyr31. AA range:15-64
Mol wt	64533
Species reactivity	Human, Mouse, Rat
Clonality	Polyclonal
Recommended application	WB, IHC-p, IF, ELISA
Concentration	1 mg/ml
Full name	Paxillin
Synonyms	Paxillin; PXN; Paxillin

This product is for research use only, not for use in human, therapeutic or diagnostic procedure.

Background

This gene encodes a cytoskeletal protein involved in actin-membrane attachment at sites of cell adhesion to the extracellular matrix (focal adhesion). Alternatively spliced transcript variants encoding different isoforms have been described for this gene. These isoforms exhibit different expression pattern, and have different biochemical, as well as physiological properties (PMID:9054445).

Recommended Dilution

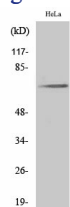
WB: 1: 500 - 1: 2000

IHC-p: 1: 100 - 1: 300

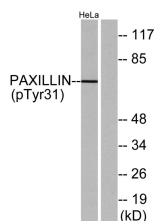
ELISA: 1: 20000

Not yet tested in other applications.

Images



Western Blot analysis of various cells using Phospho-Paxillin (Y31) Polyclonal Antibody diluted at 1:1000



Western blot analysis of lysates from HeLa cells treated with TNF 200ng/ml 2', using Paxillin (Phospho-Tyr31) Antibody. The lane on the right is blocked with the phospho peptide.

Storage

-20°C for 1 year

501 Changsheng S Rd, Nanhu Dist, Jiaxing, Zhejiang, China

Tel: 86 21 31007137 | E-mail: save@bt-laboratory.com | www.bt-laboratory.com