

PBP Polyclonal Antibody

Description

Product type	Primary Antibody
Code	BT-AP12826
Host	Rabbit
Isotype	IgG
Size	20ul, 50ul, 100ul
Immunogen	Synthetic peptide from human protein at AA range: 71-120
Mol wt	N/A
Species reactivity	Human, Rat, Mouse
Clonality	Polyclonal
Recommended application	IHC-p, IF, ELISA
Concentration	1 mg/ml
Full name	Platelet basic protein
Synonyms	Platelet basic protein ;PBP;C-X-C motif chemokine 7;Leukocyte-derived growth factor;LDGF;Macrophage-derived growth factor;MDGF;Small-inducible cytokine B7 [Cleaved into: Connective tissue; Platelet basic protein; PBP; C-X-C motif chemokine 7; Leukocyte-derived growth factor; LDGF; Macrophage-derived growth factor; MDGF; Small-inducible cytokine B7; Connective tissue-activating peptide III; CTAP-III; LA-PF4; Low-affinity platelet factor IV; TC-2; Connective tissue-activating peptide III;1-81; CTAP-III;1-81; Beta-thromboglobulin; Beta-TG; Neutrophil-activating peptide 2;74; NAP-2;74; Neutrophil-activating peptide 2;73; NAP-2;73; Neutrophil-activating peptide 2; NAP-2; TC-1; Neutrophil-activating peptide 2;1-66; NAP-2;1-66; Neutrophil-activating peptide 2;1-63; NAP-2;1-63;

This product is for research use only, not for use in human, therapeutic or diagnostic procedure.

Background

The protein encoded by this gene is a platelet-derived growth factor that belongs to the CXC chemokine family. This growth factor is a potent chemoattractant and activator of neutrophils. It has been shown to stimulate various cellular processes including DNA synthesis, mitosis, glycolysis, intracellular cAMP accumulation, prostaglandin E2 secretion, and synthesis of hyaluronic acid and sulfated glycosaminoglycan. It also stimulates the formation and secretion of plasminogen activator by synovial cells. The protein also is an antimicrobial protein with bactericidal and antifungal activity.

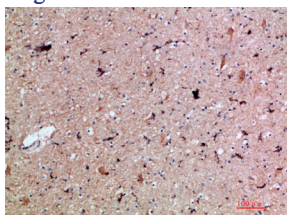
Recommended Dilution

IHC-p: 1: 50 - 1: 200

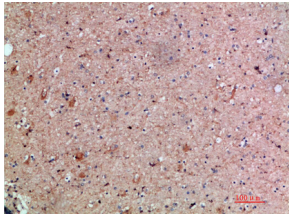
ELISA: 1: 10000 - 1: 20000

Not yet tested in other applications.

Images



Immunohistochemical analysis of paraffin-embedded human-brain, antibody was diluted at 1:200



Immunohistochemical analysis of paraffin-embedded human-brain, antibody was diluted at 1:200

Storage

-20°C for 1 year

501 Changsheng S Rd, Nanhu Dist, Jiaxing, Zhejiang, China

Tel: 86 21 31007137 | E-mail: save@bt-laboratory.com | www.bt-laboratory.com