

## STAU2 Rabbit Polyclonal Antibody

### Description

<b>Product type</b>	Primary Antibody
<b>Code</b>	BT-AP12852
<b>Host</b>	Rabbit
<b>Isotype</b>	IgG
<b>Size</b>	20ul, 50ul, 100ul
<b>Immunogen</b>	Synthesized peptide derived from human STAU2
<b>Mol wt</b>	N/A
<b>Species reactivity</b>	Human, Mouse, Rat
<b>Clonality</b>	Polyclonal
<b>Recommended application</b>	WB
<b>Concentration</b>	1 mg/ml
<b>Full name</b>	STAU2
<b>Synonyms</b>	STAU2; Double-stranded RNA-binding protein Staufen homolog 2

This product is for research use only, not for use in human, therapeutic or diagnostic procedure.

### Background

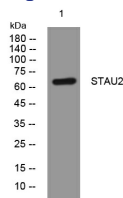
Staufen homolog 2 is a member of the family of double-stranded RNA (dsRNA)-binding proteins involved in the transport and/or localization of mRNAs to different subcellular compartments and/or organelles. These proteins are characterized by the presence of multiple dsRNA-binding domains which are required to bind RNAs having double-stranded secondary structures. Staufen homolog 2 shares 48.5% and 59.9% similarity with drosophila and human staufen| respectively. The exact function of Staufen homolog 2 is not known| but since it contains 3 copies of conserved dsRNA binding domain| it could be involved in double-stranded RNA binding events. Several transcript variants encoding different isoforms have been found for this gene.

### Recommended Dilution

WB: 1: 500 - 1: 2000

Not yet tested in other applications.

### Images



Western blot analysis of lysates from Jarkat cells, primary antibody was diluted at 1:1000, 4°C overnight

### Storage

-20°C for 1 year