

PCY1A Polyclonal Antibody

Description

Product type	Primary Antibody
Code	BT-AP12853
Host	Rabbit
Isotype	IgG
Size	20ul, 50ul, 100ul
Immunogen	Synthesized peptide derived from part region of human protein
Mol wt	N/A
Species reactivity	Human, Mouse, Rat
Clonality	Polyclonal
Recommended application	WB, ELISA
Concentration	1 mg/ml
Full name	Choline-phosphate cytidylyltransferase A
Synonyms	Choline-phosphate cytidylyltransferase A ;EC 2.7.7.15;CCT-alpha;CTP:phosphocholine cytidylyltransferase A;CCT A;CT A;Phosphorylcholine transferase A

This product is for research use only, not for use in human, therapeutic or diagnostic procedure.

Background

This gene belongs to the cytidylyltransferase family and is involved in the regulation of phosphatidylcholine biosynthesis. Mutations in this gene are associated with spondylometaphyseal dysplasia with cone-rod dystrophy. Alternatively spliced transcript variants have been found for this gene.

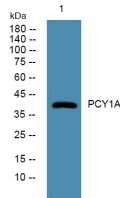
Recommended Dilution

WB: 1: 500 - 1: 2000

ELISA: 1: 5000 - 1: 20000

Not yet tested in other applications.

Images



Western blot analysis of lysates from A431 cells, primary antibody was diluted at 1:1000, 4°C overnight

Storage

-20°C for 1 year