

PD-L2 Polyclonal Antibody

Description

Product type	Primary Antibody
Code	BT-AP12855
Host	Rabbit
Isotype	IgG
Size	20ul, 50ul, 100ul
Immunogen	Synthetic peptide from human protein at AA range: 31-80
Mol wt	N/A
Species reactivity	Human, Rat, Mouse
Clonality	Polyclonal
Recommended application	WB, IHC-p, IF, ELISA
Concentration	1 mg/ml
Full name	Programmed cell death 1 ligand 2
Synonyms	Programmed cell death 1 ligand 2 ;PD-1 ligand 2;PD-L2;PDCD1 ligand 2;Programmed death ligand 2;Butyrophilin B7-DC;B7-DC;CD antigen CD273; Programmed cell death 1 ligand 2; PD-1 ligand 2; PD-L2; PDCD1 ligand 2; Programmed death ligand 2; Butyrophilin B7-DC; B7-DC; CD antigen CD273

This product is for research use only, not for use in human, therapeutic or diagnostic procedure.

Background

Involved in the costimulatory signal, essential for T-cell proliferation and IFNG production in a PDCD1-independent manner. Interaction with PDCD1 inhibits T-cell proliferation by blocking cell cycle progression and cytokine production.,induction:Up-regulated by IFNG stimulation in monocytes and induced on dendritic cells grown from peripheral blood mononuclear cells with CSF2 and IL4.,Belongs to the immunoglobulin superfamily. BTN/MOG family.,Contains 1 Ig-like C2-type (immunoglobulin-like) domain.,Contains 1 Ig-like V-type (immunoglobulin-like) domain.,subunit:Interacts with PDCD1.,tissue specificity:Highly expressed in heart, placenta, pancreas, lung and liver and weakly expressed in spleen, lymph nodes and thymus.,

Recommended Dilution

WB: 1: 500 - 1: 2000

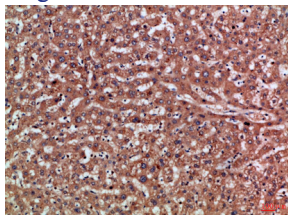
IHC-p: 1: 50 - 1: 200

ELISA: 1: 20000

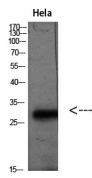
ELISA: 1: 10000 - 1: 20000

Not yet tested in other applications.

Images



Immunohistochemical analysis of paraffin-embedded Human-liver, antibody was diluted at 1:100



Western blot analysis of HeLa(TSA 400nM 24h) lysate, antibody was diluted at 2000. Secondary antibody was diluted at 1:20000

Storage

-20°C for 1 year

501 Changsheng S Rd, Nanhu Dist, Jiaxing, Zhejiang, China

Tel: 86 21 31007137 | E-mail: save@bt-laboratory.com | www.bt-laboratory.com