

PDD2L Polyclonal Antibody

Description

Product type	Primary Antibody
Code	BT-AP12866
Host	Rabbit
Isotype	IgG
Size	20ul, 50ul, 100ul
Immunogen	Synthesized peptide derived from human protein . at AA range: 180-260
Mol wt	N/A
Species reactivity	Human, Rat, Mouse
Clonality	Polyclonal
Recommended application	WB, ELISA
Concentration	1 mg/ml
Full name	Programmed cell death protein 2-like
Synonyms	Programmed cell death protein 2-like

This product is for research use only, not for use in human, therapeutic or diagnostic procedure.

Background

PDCD2L (Programmed Cell Death 2 Like) is a Protein Coding gene. An important paralog of this gene is ENSG00000266953. Over-expression suppresses AP1, CREB, NFAT, and NF- κ B transcriptional activation, and delays cell cycle progression at S phase.

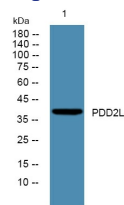
Recommended Dilution

WB: 1: 500 - 1: 2000

ELISA: 1: 5000 - 1: 20000

Not yet tested in other applications.

Images



Western blot analysis of lysates from HCT116 cells, primary antibody was diluted at 1:1000, 4°C overnight

Storage

-20°C for 1 year