

STX3 Rabbit Polyclonal Antibody

Description

Product type	Primary Antibody
Code	BT-AP12895
Host	Rabbit
Isotype	IgG
Size	20ul, 50ul, 100ul
Immunogen	Synthesized peptide derived from human STX3
Mol wt	31790
Species reactivity	Human, Mouse, Rat
Clonality	Polyclonal
Recommended application	WB
Concentration	1 mg/ml
Full name	STX3
Synonyms	STX3

This product is for research use only, not for use in human, therapeutic or diagnostic procedure.

Background

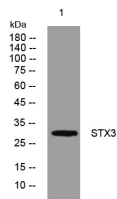
The gene is a member of the syntaxin family. The encoded protein is targeted to the apical membrane of epithelial cells where it forms clusters and is important in establishing and maintaining polarity necessary for protein trafficking involving vesicle fusion and exocytosis. Alternative splicing results in multiple transcript variants.

Recommended Dilution

WB: 1: 500 - 1: 2000

Not yet tested in other applications.

Images



Western blot analysis of lysates from K562 cells, primary antibody was diluted at 1:1000, 4°C overnight

Storage

-20°C for 1 year

501 Changsheng S Rd, Nanhu Dist, Jiaxing, Zhejiang, China

Tel: 86 21 31007137 | E-mail: save@bt-laboratory.com | www.bt-laboratory.com