

STXB2 Rabbit Polyclonal Antibody

Description

Product type	Primary Antibody
Code	BT-AP12899
Host	Rabbit
Isotype	IgG
Size	20ul, 50ul, 100ul
Immunogen	Synthesized peptide derived from human STXB2
Mol wt	65230
Species reactivity	Human, Mouse, Rat
Clonality	Polyclonal
Recommended application	WB
Concentration	1 mg/ml
Full name	STXB2
Synonyms	STXB2

This product is for research use only, not for use in human, therapeutic or diagnostic procedure.

Background

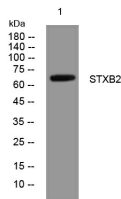
This gene encodes a member of the STXBP/unc-18/SEC1 family. The encoded protein is involved in intracellular trafficking| control of SNARE (soluble NSF attachment protein receptor) complex assembly| and the release of cytotoxic granules by natural killer cells. Mutations in this gene are associated with familial hemophagocytic lymphohistiocytosis. Alternatively spliced transcript variants encoding different isoforms have been noted for this gene.

Recommended Dilution

WB: 1: 500 - 1: 2000

Not yet tested in other applications.

Images



Western blot analysis of lysates from AD293 cells, primary antibody was diluted at 1:1000, 4°C overnight

Storage

-20°C for 1 year